



ring

Door View Cam



Model: G63R9A





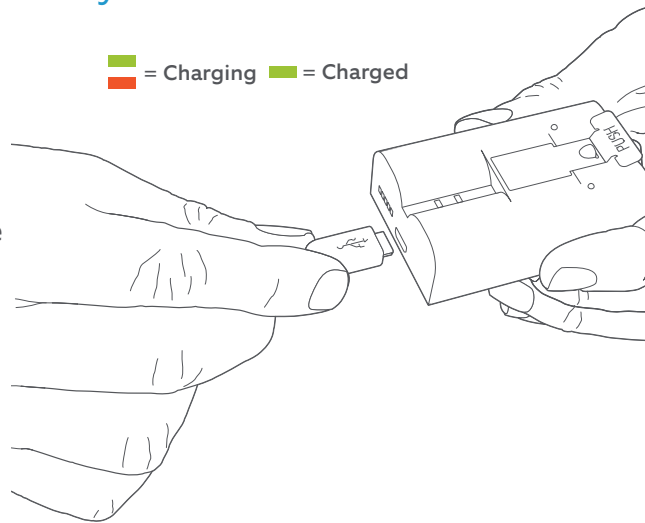
Charge the provided battery.

First, fully charge the battery. Find it in the Door View Kit tray, along with the adapter and tightening nut.

Plug it into a USB power source using the provided orange cable (located underneath your Door View Key).

The battery is fully charged when just one LED is lit.

 = Charging  = Charged



Download the Ring app.

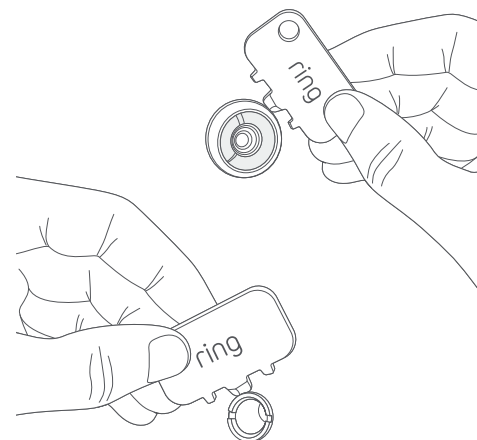
The Ring app walks you through setting up and managing your Door View Cam.

Download it on your iOS or Android device.



Grab your Wi-Fi password.

You'll need it later to set up your Door View Cam. Write it down below so it's handy when you need it:



Clean up any paint.

If your peephole was painted over, you may have to remove the excess in order to unscrew it (if not, skip ahead).


Check for paint on or around your peephole, both indoors and outdoors.

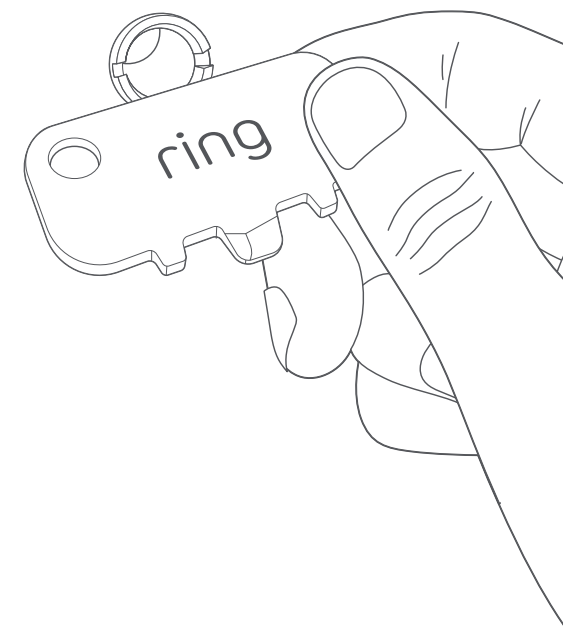
Use the toothed edge of the Door View Key to carefully remove paint covering the edges or slots.

Remove the indoor half.

On the indoor side, place the flat edge of the Door View Key into the slots on your peephole and rotate counter-clockwise to unscrew it.

Once it's loose enough, you can use your fingers to finish unscrewing it and remove it completely.

 You may have to secure the outdoor side of the peephole while unscrewing the indoor portion to keep it from spinning.



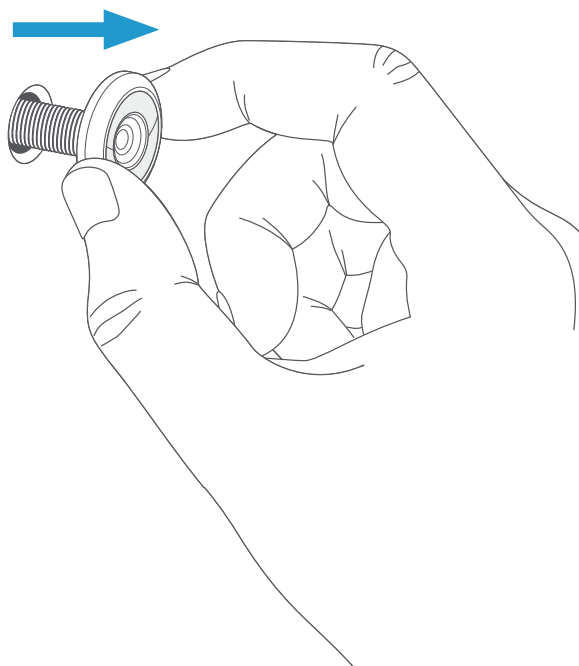


Remove the outdoor half.

With the indoor side removed, the outdoor portion should slide right out.

In the event that it doesn't, check again for paint or other obstructions around the lens.

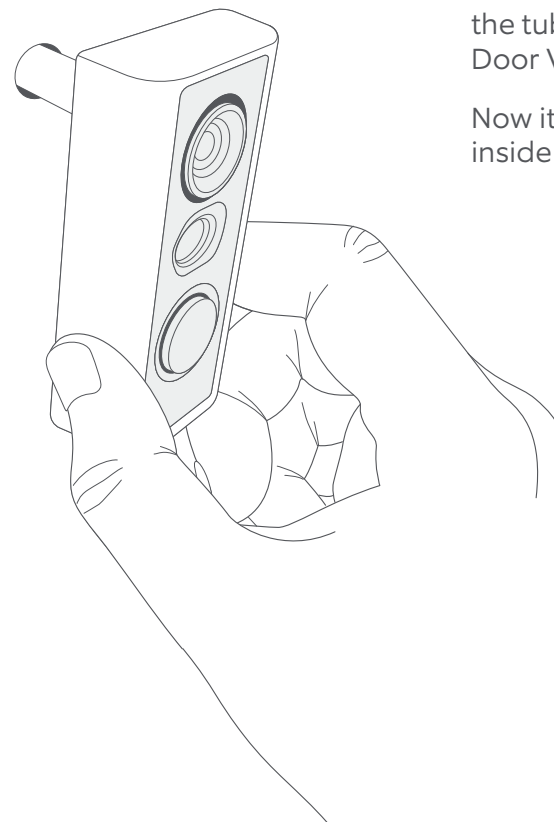
If this isn't your forever home, consider storing the peephole in a safe place in case you have to re-install it one day.



Place the outdoor assembly.

From the front side of your door, insert the tube through the hole until your Door View Cam is flush with the door.

Now it's time to continue setup on the inside part of your door.

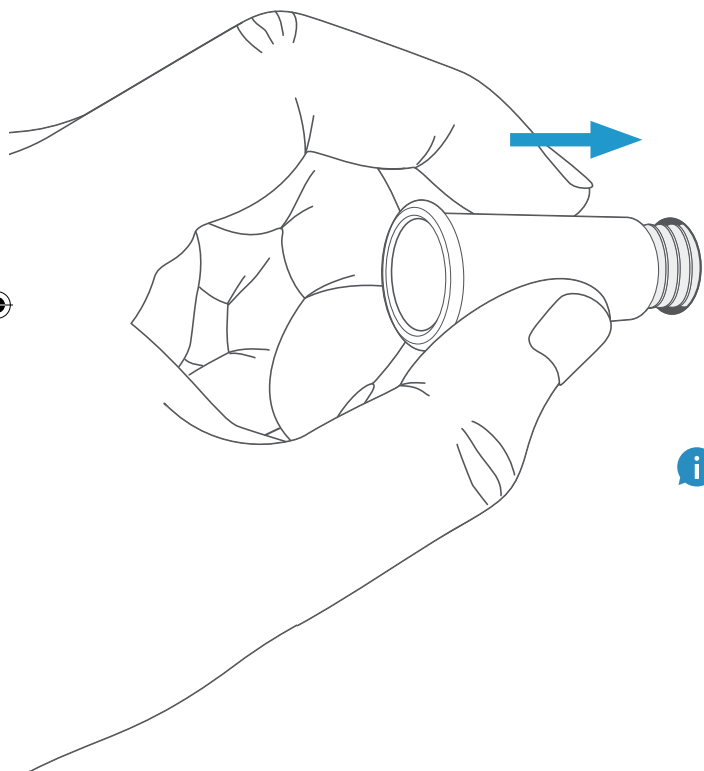




You *might* need the included adapter.

It's used to support larger door view holes. Let's find out if it'll fit yours...

Remove the adapter from the Door View Kit tray. From the indoor side of your door, place the adapter over the tube and cable, then slide it towards the hole.



If it DOES NOT slide in easily,
don't force it through.
You won't need the adapter.

If it DOES slide in easily,
insert the adapter until the
rim is flush with your door.

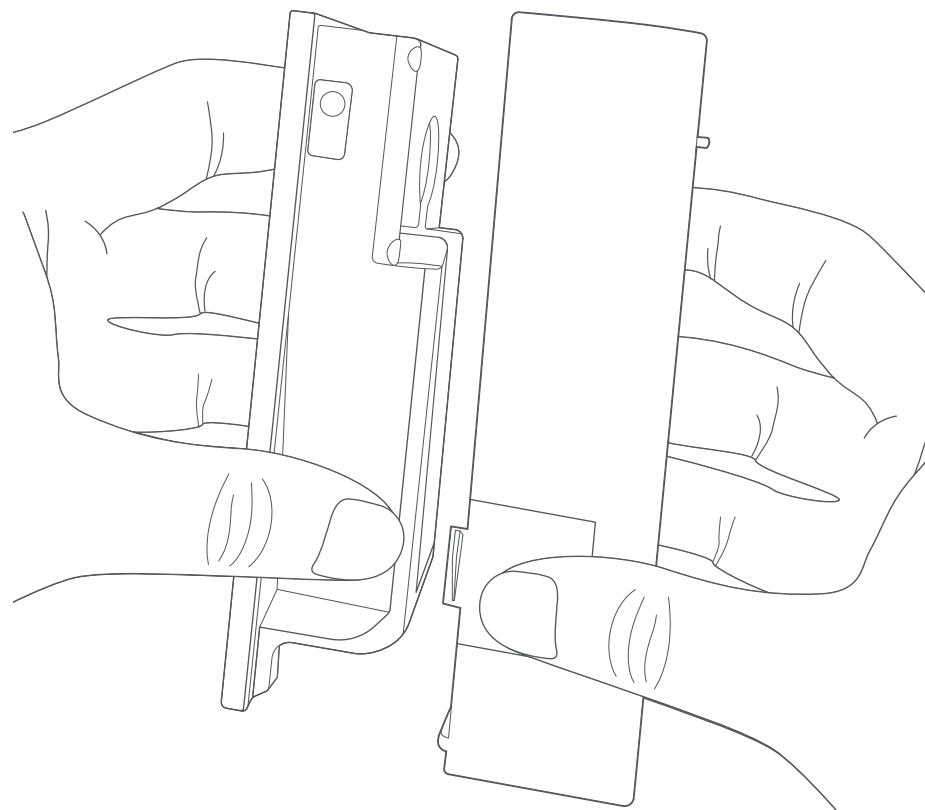


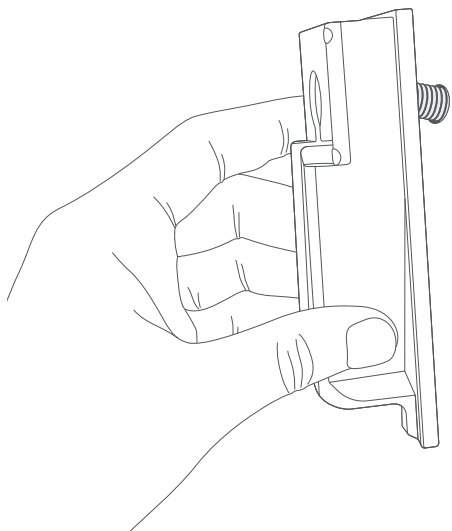
You may have to hold the outdoor assembly in place while inserting the adapter to keep it from falling out; if you've got a wide door, grab a partner.

Remove the rear cover.

Grasp the thin edge of the indoor assembly body, and pinch the cover at the indentations.

Pull the body and cover apart. Set the cover aside for now.





Place the indoor assembly.

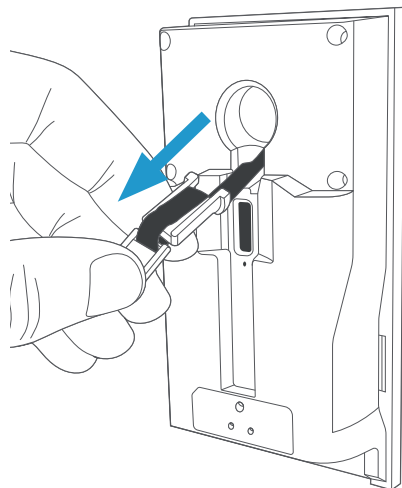
Next, carefully slide the indoor assembly onto the tube until it's flush with your door, making sure the outdoor assembly isn't pushed out the other side.

i Once again, you may have to hold the outdoor assembly in place to keep it from falling out while placing the indoor assembly.

Remove the connector cable.

We tucked it into the tube for safe travels, but now it's time to take it out.

Grasp either side of the exposed tab, and delicately draw it out of the tube until there's no more slack left.

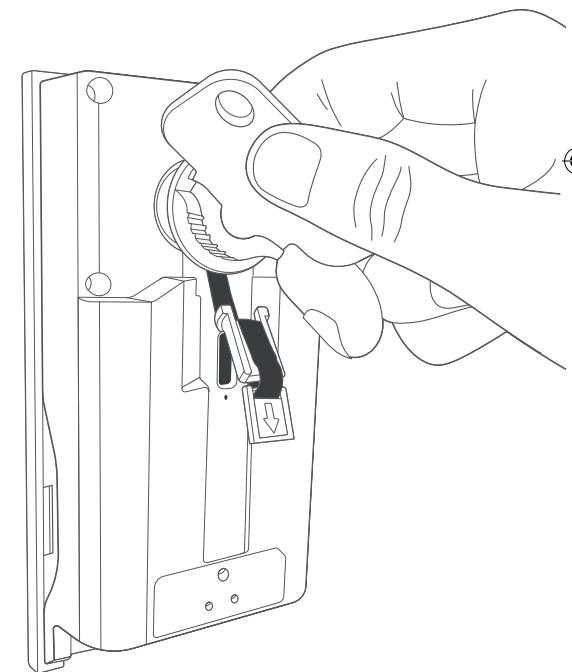


Join the indoor and outdoor assemblies.

With the cable out of the way, place the tightening nut from the Door View Kit tray over the tube and into the hole.

Using either your fingers or the Door View Key, twist clockwise and **tighten firmly** to make sure your Door View Cam doesn't rotate freely.

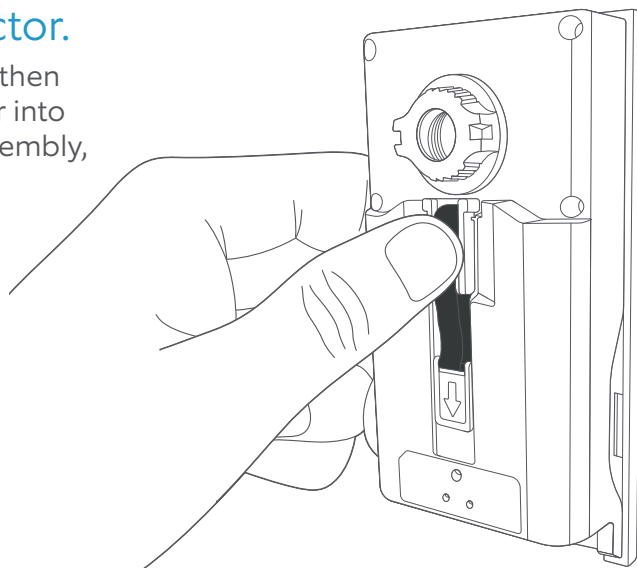
Once secure, check the outdoor assembly. It may shift slightly while tightening, so make sure it's level.





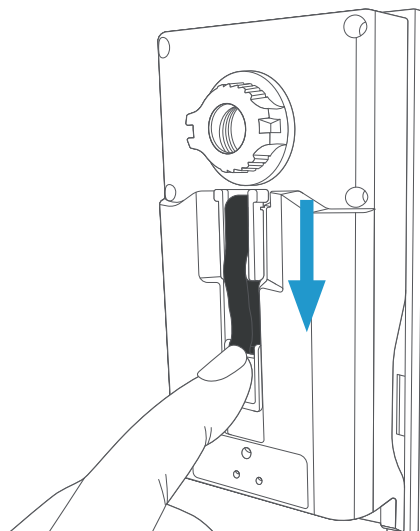
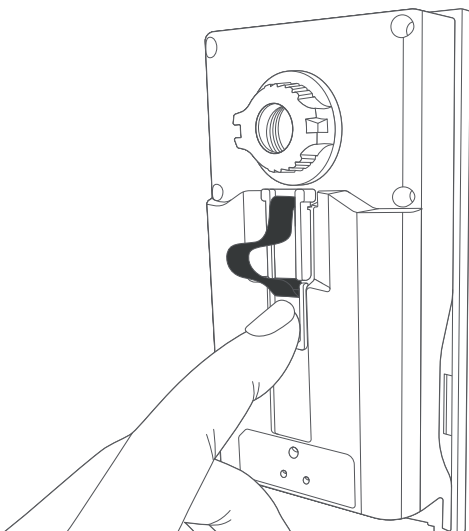
Plug in the connector.

Gently pull the cable taut, then **firmly press** the connector into the port on the indoor assembly, ensuring it is inserted.



Secure the cable.

Guide the tab with the arrow into the channel, and slide it down to secure the remaining slack in the cable.



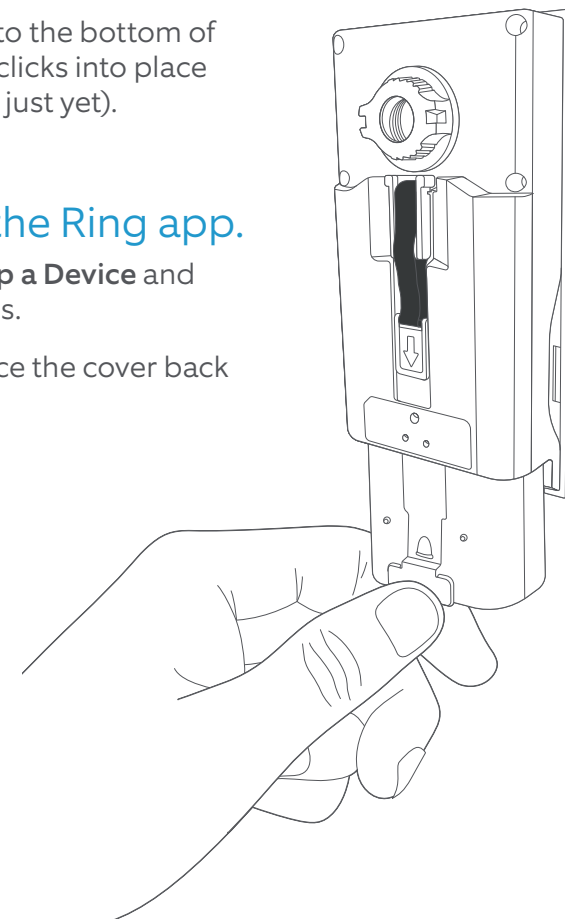
Insert the battery.

Slide the charged battery into the bottom of your Door View Cam until it clicks into place (don't put the cover back on just yet).

Complete setup in the Ring app.

In the Ring app, select **Set Up a Device** and follow the in-app instructions.

Once setup is complete, place the cover back on your Door View Cam.





For additional help, visit: ring.com/help

Or give us a call...

[US 1 800 656 1918](tel:18006561918)

[Canada 1 855 300 7289](tel:18553007289)

[Worldwide +1 310 929 7085](tel:+13109297085)

For a list of all our customer support numbers, visit: ring.com/callus

To review your warranty coverage, please visit www.ring.com/warranty.

© 2019 Ring LLC or its affiliates.

Ring and all related logos are trademarks of Amazon.com, Inc. or its affiliates.

Last updated: 05/09/19